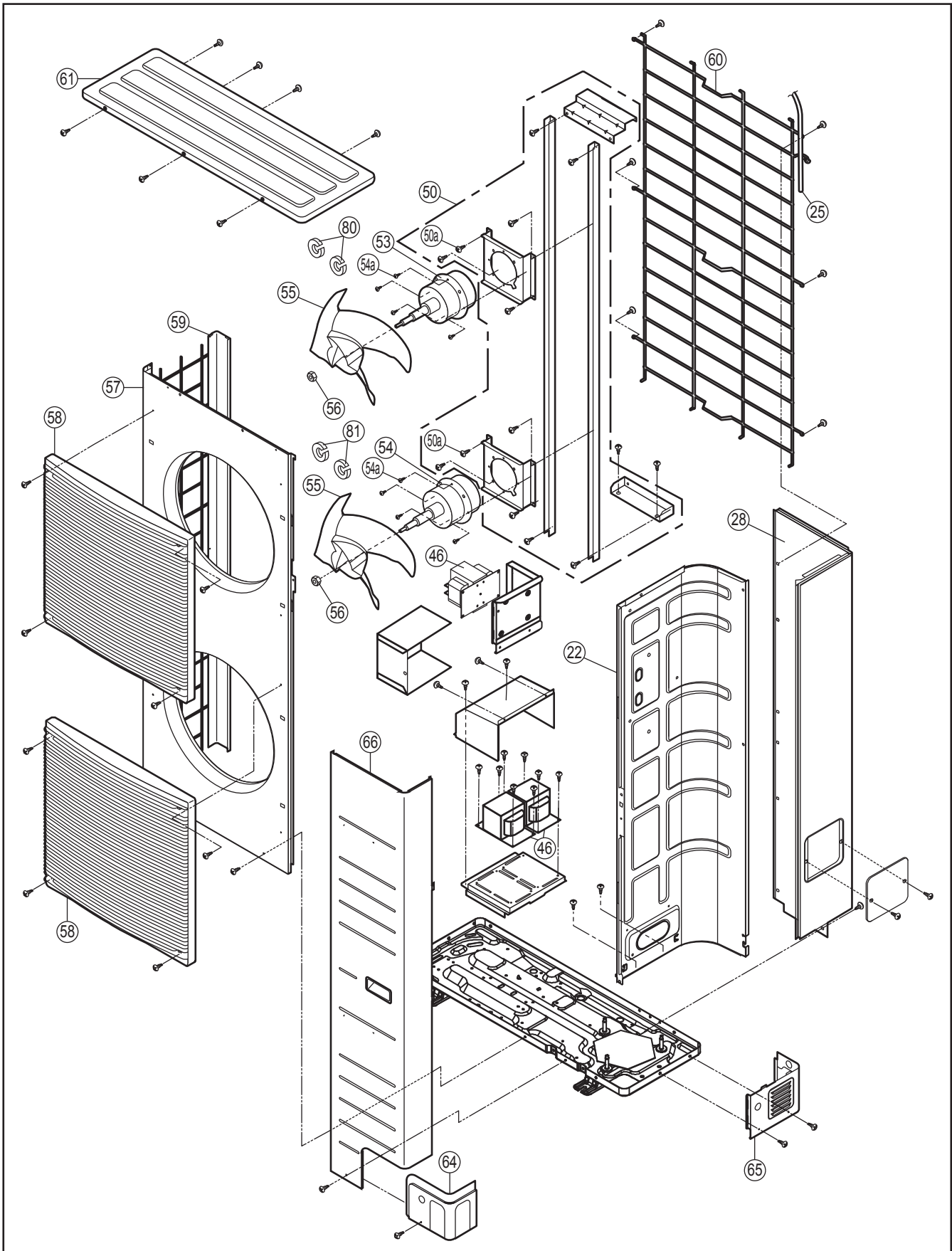
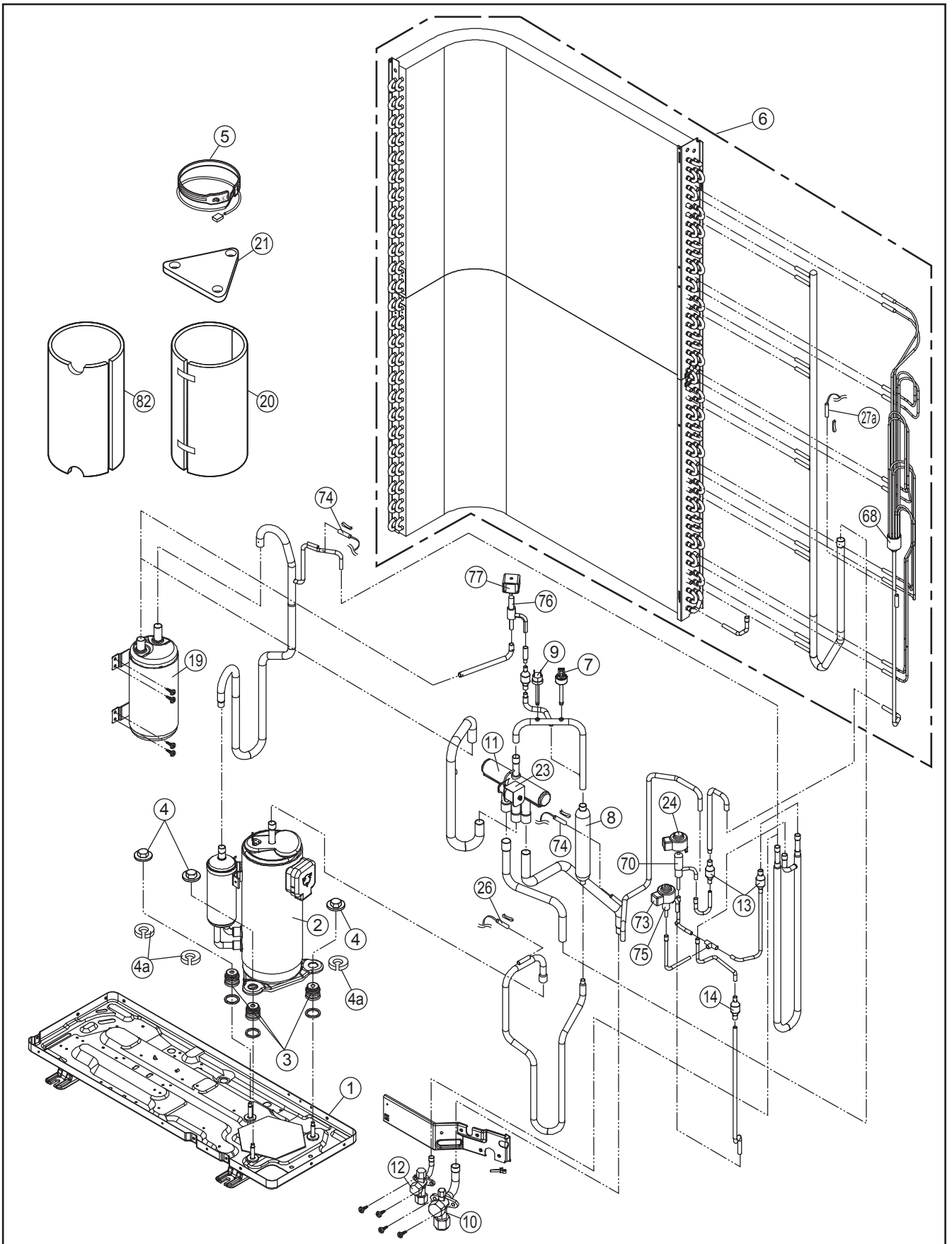


## 19.2 Outdoor Unit



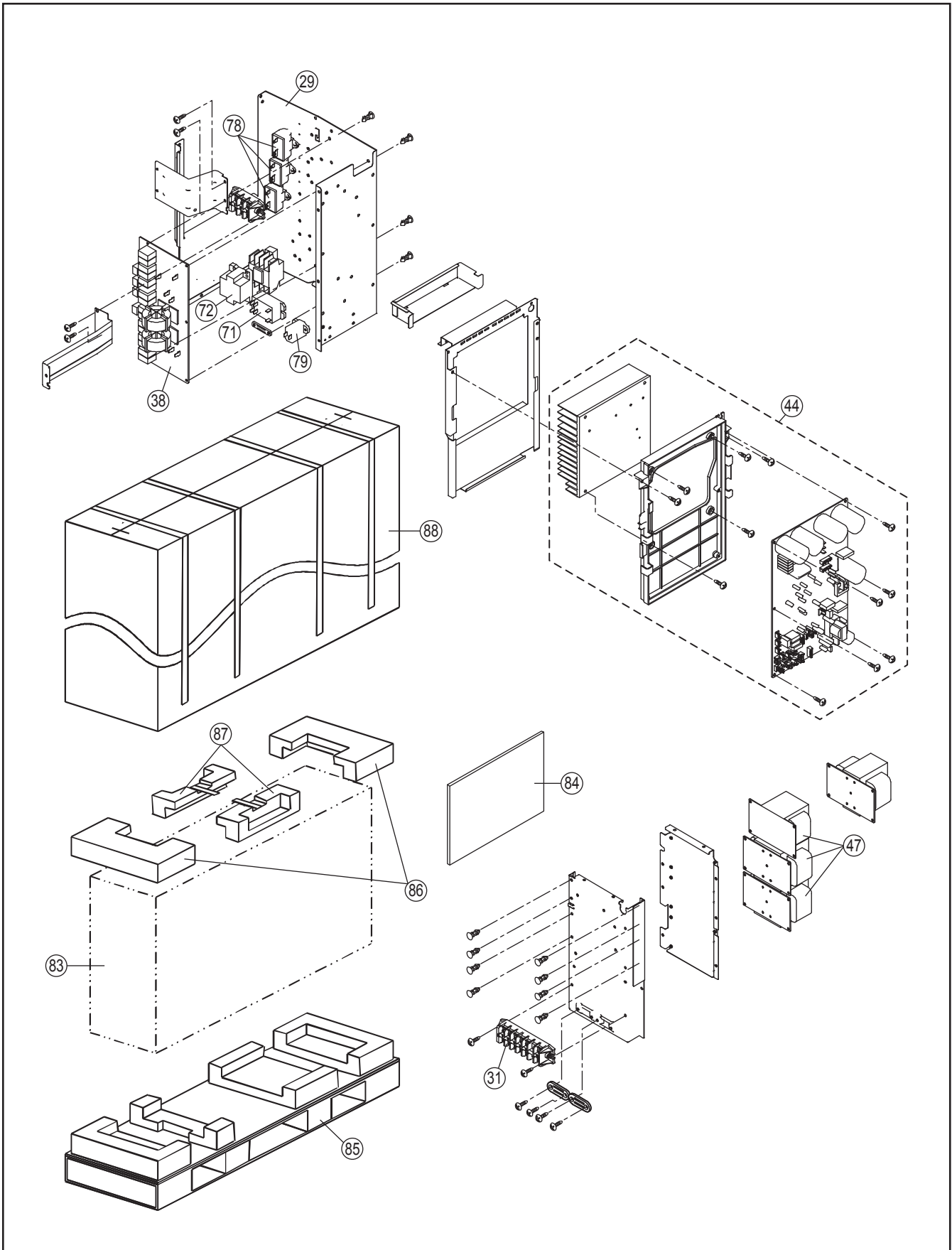
**Note:**

- The above exploded view is for the purpose of parts disassembly and replacement.
- The non-numbered parts are not kept as standard service parts.



**Note:**

- The above exploded view is for the purpose of parts disassembly and replacement.
- The non-numbered parts are not kept as standard service parts.





**Note:**

- The above exploded view is for the purpose of parts disassembly and replacement.
- The non-numbered parts are not kept as standard service parts.

<Model: WH-UX16FE8>

SAFETY	REF. NO.	DESCRIPTION & NAME	QTY.	WH-UX16FE8	REMARK
	1	BASE PAN ASS'Y	1	CWD52K1275	
	2	COMPRESSOR	1	5JD650XBA22	O
	3	ANTI-VIBRATION BUSHING	3	CWH50055	
	4	NUT - COMPRESSOR MOUNT	3	CWH561049	
	4a	GASKET FOR COMPRESSOR	3	CWB811017	
	5	CRANKCASE HEATER	1	CWA341053	
	6	CONDENSER COMPLETE	1	CWB32C3945	
	7	HIGH PRESSURE SENSOR	1	CWA501463	
	8	DISCHARGE MUFFLER	1	CWB121014	
	9	HEATING PRESSURE SWITCH	1	CWA101013	
	10	3-WAYS VALVE (GAS)	1	CWB011251	O
	11	4-WAYS VALVE	1	CWB001046	O
	12	3-WAYS VALVE (LIQUID)	1	CWB011292	O
	13	STRAINER	2	CWB111032	
	14	STRAINER	1	CWB111032	
	19	ACCUMULATOR	1	CWB131026A	
	20	SOUND PROOF MATERIAL	1	CWG302795	
	21	SOUND PROOF MATERIAL	1	CWG302266	
	22	SOUND PROOF BOARD ASSY	1	CWH15K1031	
	23	V-COIL COMPLETE (4 WAY VALVE)	1	CWA43C2169J	O
	24	V-COIL COMPLETE (CN-EV1)	1	CWA43C2602	O
	25	SENSOR - CO. (OUTLET TEMP)	1	CWA50C2730	O
	26	SENSOR - CO. (DIS T.TEMP)	1	CWA50C2576	O
	27a	SENSOR - CO. (DEFROST)	1	CWA50C2577	O
	28	CABINET REAR PLATE - COMPLETE	1	CWE02C1077	
	29	CONTROL BOARD A'SSY	1	CWH10K1228	
	31	TERMINAL BOARD ASS'Y (TO INDOOR)	1	CWA28K1214	O
	38	ELECTRONIC CONTROLLER (NOISE FILTER)	1	CWA747735	O
	44	ELECTRONIC CONTROLLER - MAIN	1	CWA73C8048R	O
	46	REACTOR (P1)	3	G0C213J00001	O
	47	REACTOR (P2)	3	G0C353J00001	O
	50	FAN MOTOR BRACKET ASS'Y	1	CWD54K1024	
	50a	SCREW - FAN MOTOR BRACKET	2	CWH551040J	
	53	UPPER FAN MOTOR	1	EHDS83CAC	O
	54	LOWER FAN MOTOR	1	EHDS83DAC	O
	54a	SCREW - FAN MOTOR MOUNT	8	CWH551323	
	55	PROPELLER FAN ASS'Y	2	CWH00K1006	
	56	NUT FOR P.FAN	2	CWH561092	
	57	CABINET FRONT PLATE	1	CWE061098A	
	58	DISCHARGE GRILLE	2	CWE201073	
	59	CABINET SIDE PLATE ASS'Y	1	CWE04K1023A	
	60	WIRE NET	1	CWD041103A	
	61	CABINET TOP PLATE - COMPLETE	1	CWE03C1096	
	64	PIPE COVER (FRONT)	1	CWD601074A	
	65	PIPE COVER (BACK)	1	CWD601075A	
	66	CABINET FRONT PLATE - COMPLETE	1	CWE06C1091	
	68	TUBE ASS'Y COMP (CAP TUBE)	1	CWT07K1742	
	70	EXPANSION VALVE (1)	1	CWB051049	O
	71	MAGNET RELAY (CN-RY1)	1	K6C2AGA00002	O
	72	MAGNET RELAY (CN-RY2)	1	K6C4E8A00001	O
	73	V-COIL COMPLETE (CN-EV2)	1	CWA43C2335	O
	74	SENSOR - COMPLETE (BYPASS)	1	CWA50C2807	O
	75	EXPANSION VALVE (2)	1	CWB051029	O

SAFETY	REF. NO.	DESCRIPTION & NAME	QTY.	WH-UX16FE8	REMARK
	76	2-WAYS VALVE	1	CWB021637	O
	77	V-COIL COMPLETE (2 WAY VALVE)	1	CWA43C2607	O
	78	CAPACITOR (6.0Uf/440V)	3	DS451605DPQB	O
	79	PTC THERMISTORS	1	D4DDG1010001	O
	80	WASHER FOR P.FAN	2	CWH571067	
	81	WASHER FOR P.FAN	2	CWH571068	
	82	SOUND PROOF MATERIAL	1	CWG302821	
	83	BAG	1	CWG861204	
	84	SHOCK ABSORBER	1	CWG712922	
	85	BASE BOARD - COMPLETE	1	CWG62C1086	
	86	SHOCK ABSORBER (TOP LEFT RIGHT)	2	CWG712852	
	87	SHOCK ABSORBER (TOP MIDDLE)	1	CWG712854	
	88	C.C.CASE	1	CWG568054	

**Note:**

- All parts are supplied from PAPAMY, Malaysia (Vendor Code: 00029488).
- "O" marked parts are recommended to be kept in stock.